



# Light Lunch Set

(Weekdays only)

Available 12-15pm

£13.95



## Step.1

### Choose the main dish

L3 Salmon TERIYAKI  
L5 Chicken KARAAGE  
L7 Chicken TERIYAKI  
LV Agedashi TOFU

LT TENPURA  
LG GYOZA  
LE Eel & Chicken TERIYAKI

## Step.2

### Choose your dessert or Miso Soup

Dorayaki pancake  
(Chocolate or Matcha Custard)  
Daifuku Mochi  
Matcha Chiffon Cake with Azuki cream  
Mochi Dessert (Mango or Chocolate)  
Mount Fuji Ice Cream – One Scoop  
(Matcha, Chocolate and French Vanilla)



## Add a drink

Tea & Coffee +£2  
Cold drink +£2  
Drinks from Japan +£3  
Original Drinks +£3.50

(Smoothie, Cream Soda, Coke Float)





# SUSHI



# SASHIMI

## Assorted sashimi



**3 types of Sashimi**  
Tuna, salmon & scallop

3 pieces..... 11.85  
5 pieces..... 19.95



**5 types of Sashimi**  
Tuna, salmon, scallop,  
sweet prawn, hokki

3 pieces..... 19.95  
5 pieces..... 29.95

### A la Carte Sashimi

#### 5 Pieces

- Salmon 7.50
- Squid 7.50
- Tuna 7.80
- Hokki 7.80
- Scallop 7.80

#### 10 Pieces

- Sweet Prawn 7.50

## Nigiri Sushi Set



**Nigiri Sushi Set A 9.80**  
Salmon, tuna, prawn,  
hokki & eel nigiri



**Nigiri Sushi Set B 14.95**  
Salmon, tuna, prawn,  
hokki, eel nigiri  
salmon avocado roll  
kappa roll



**Salmon Combo Plate 17.90**  
Nigiri, maki, hand wrap,  
sashimi & Tobiko roe



**Tuna Combo Plate 18.90**  
2 Nigiri and sashimi  
5 Spicy rolls and 6 rolls

## Sushi Roll



**Spider Roll (8 pieces) 17.75**  
Soft shell crab, avocado and  
cucumber rolls with tobiko roe



**Spicy Tuna Roll (5 pieces) 7.95**  
Tuna, avocado & spring onion

## Kaisen Donburi



**Sashimi Donburi with  
Miso Soup 17.95**  
**Chef's Special**  
(ask for availability)

Bowl of rice with selection  
of Sashimi of chef's daily  
of choice



**Salmon Tobiko Donburi  
with Miso Soup 21.00**  
Salmon & Tobiko roe on bowl  
of sushi rice

## Assorted Sushi

### Nigiri Sushi (2 pieces)

Egg/Inari (3pcs,V Ve)	3.95
Prawn/Salmon/Sweet prawn	4.95
Tuna/Squid/Scallop/Tobiko	5.95
Eel/Shellfish(Hokki)	6.60



### Sushi Roll-Thin (6 pieces)

Cucumber roll (V, Ve)	3.95
Tuna roll	5.65
Salmon roll	5.65

### Sushi Roll-Medium (4pieces)

Chicken salad roll	5.65
Salmon avocado roll	5.65
Avocado salad roll (V, Ve)	4.95

# Sharing plate 🗻 side orders

Takoyaki Balls	5.95
Wakame Salad	4.25
Age Dashi Tofu	5.60
Miso Soup	2.95
Edamame Beans (Ve)	4.95
Tofu Salad (Ve)	6.85
Chicken Teriyaki	8.50
Chicken Wings	6.95
Pumpkin Croquette (V)	4.20



Mixed Tempura 8.80

Tempura Veg 8.80

Prawn Tempura 6.50

## Takoyaki

Salmon Sashimi 6.95

Squid Sashimi 7.20

Sweet Prawn Sashimi 7.20

Scallop Sashimi 7.50

Tuna Sashimi 7.50

Hokki Sashimi 7.50



## Gyoza

Vegetable (Ve) 7.50

Chicken or Pork 7.50

Prawn or Duck 7.95



### Allergies:

Most of our meals contain allergens especially sesame, please ask for details.  
We can NOT guarantee any meal is free of trace of allergens listed or not listed.



# Bento Menu

## MAIN BENTO

(Rice/Salad/Main/Pickles) **Why not add Miso Soup +£2.95**

- M5 Chunky Chicken KARAGE Bento 15.95
- M6 Chicken KATSU Bento 15.95
- M7 Chicken TERIYAKI Bento 15.95
- M8 Giant Prawn (Ebi fry) Bento 16.95
- M9 Pork TONKATSU Bento 16.95
- M10 Chicken NANBAN Bento 16.95
- MV Agedashi Tofu Bento 15.95
- M3 Salmon TERIYAKI Bento 16.85
- ME Eel TERIYAKI & Chicken Bento 19.95



## COMBO BENTO with Miso soup

- SPA Chicken TERIYAKI & TEMPURA Bento 19.50
- SPB Chicken TERIYAKI & PRAWN Fry Bento 19.50
- SPD Fried TOFU & Vegetable TEMPURA Bento 19.50



## Children's Bento 6.95

Chicken, Prawn in bread crumb, Rice balls and vegetables.

Fruit with 1 scoop of Ice Cream

Orange or Apple Juice

(Children under 11 years old only)





# Noodle Menu

## JAPANESE TRADITIONAL RAMEN

### SHOYU TOKYO RAMEN

(Pork or Chicken) 14.95

### MISO RAMEN

(Pork or Chicken) 14.95

### TONKOTSU KYUSHU RAMEN

(Pork or Chicken) 15.95

### TONKOTSU **SPICY** KYUSHU RAMEN

(Pork or Chicken) 15.95

### Volcano **SPICY** RAMEN

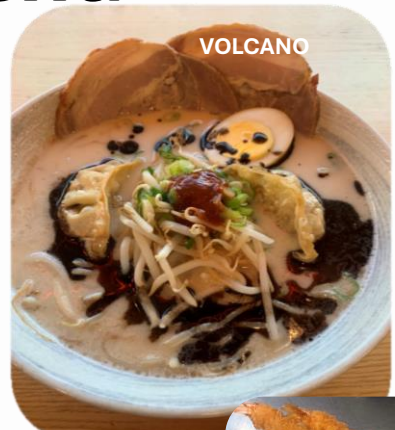
(Pork or Chicken) 17.95

### MOUNT FUJI GIANT PRAWN RAMEN

(Shoyu, Tonkotsu or Miso base) 16.50

Extra Option with £2.95

Pork Belly (2pic), Chicken Karaage (2pic), Extra Chicken,  
Chicken Gyoza (2pic), Fried Prawn (2pic), Fried Tofu (2pic)



VOLCANO



SHOYU



GIANT PRAWN



TONKOTSU



MISO

## Vegetarian & Vegan RAMEN

SHOYU TOKYO RAMEN Noodle with Tofu (V, Ve) 14.95

MISO RAMEN Noodle with Tofu (V, Ve) 14.95

## UDON NOODLE SOUP

Chicken & Curry Udon 14.95

Tempura Udon 13.95

KITSUNE Udon 13.95

Niku (Beef) Udon Soup Noodle 14.95



KITSUNE



Tempura



Niku



Curry

Allergies: Most of our meals contain allergens especially sesame, please ask for details.  
We can NOT guarantee any meal is free of trace of allergens listed

# DONBURI



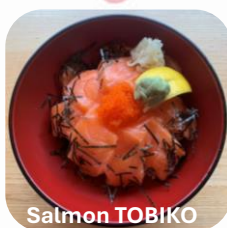
# CURRY

## DONBURI Big Bowl meals

- Beef Gyudon Donburi  13.95
- Chicken Teriyaki Donburi 13.95
- Chicken Nanban 13.95
- Grilled Eel Donburi 19.95
- Salmon TOBIKO Donburi  with Miso Soup  21.00



Chicken Nanban



Salmon TOBIKO



Gyudon



Chicken Teriyaki



## Sashimi Donburi with Miso Soup 17.95

**Chef's Special**

(ask for availability)

Bowl of rice with selection of Sashimi of chef's daily of choice

## JAPANESE CURRY Rice & Salad



Prawn Fry



Chicken KATSU



Chicken KARAGE



Vegetable

- Chunky Chicken KARAGE Curry 13.95
- Prawn Fry Curry 14.95
- Chicken (breast) KATSU Curry 13.95
- Pork TONKATSU Curry 13.95
- Pumpkin Croquette Curry (V) 12.95
- Vegetable Curry (V, Ve) 12.95



# Mount Fuji DESSERTS



## Apple Gyoza & Vanilla Ice cream 5.95

Unique Apple Gyoza & Vanilla Ice cream

## Dorayaki Pancake

## Chocolate or Matcha Custard 4.95

Classic Japanese Pancake. DORAYAKI is a sweet & fluffy pancake sandwich with Chocolate or Macha custard filling.

## Daifuku Mochi 4.95

Soft Mochi filled with tasty & sweet Azuki paste



## Matcha Chiffon Cake with Azuki cream 5.95

A slice of Matcha (Japanese green tea) chiffon cake served with azuki (red beans) cream sauce sprinkled with matcha powder. Its hand made from scratch by our chefs.

## Mango or Chocolate Mochi Dessert 5.95

Mango or Chocolate ice cream which is wrapped in a thin layer of mochi.



## Mount Fuji Ice Creams, 2 scoops

Matcha Ice Cream 5.65

French Chocolate Ice Cream 5.65

French Vanilla Ice Cream 5.65



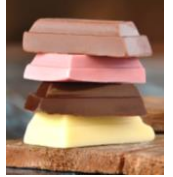
Delicious Ice Cream made for us in France



# Drinks



# MARIMBA



## Mount Fuji Green Tea & Coffee



Green Tea Sencha  
 Hoji Cha  
 Genmai cha

**From Japan** Green Tea & Mint  
 All 3.45 **free hot water refill**

Green Tea Latte 3.80  
 Hoji-Cha Latte 3.80  
 Café Latte 3.50  
 English Tea 2.50



Dark / White / Ruby

Hot Chocolate All 3.60

## Soft Drinks

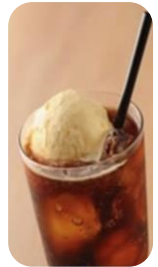
**Smoothie** 4.95  
 Green Tea or  
 Hoji-Cha



**Melon  
 Cream  
 Soda**  
 4.95



**Coke  
 Float**  
 4.95



## Soft Drinks from Japan

**Ramune (Original or Melon)** 200ml 4.50  
 A cool refreshing fizzy lemonade drink, in interesting bottle.  
**Sparkling San Melon Lemonade** 500ml 4.50  
**Sparkling Grape Soda** 500ml 4.50  
**Asahi Mitsuya Cider Rich Grape Squash** 500ml 4.50  
**Asahi Mitsuya Cider Rich Peach Squash** 500ml 4.50  
**Chilled Green Tea** 300ml 3.95  
**Chilled Oolong Tea** 300ml 3.95  
**Ocean Bomb Sparkling Water (Peach)** 300ml 3.95  
**Ocean Bomb Sparkling Water (White Grape)** 300ml 3.95

## Other Soft Drinks

Coke/Diet Coke/Coke Zero 2.95  
 J2o Orange & Passionfruit 3.50  
 J2o Apple & Raspberry 3.50  
 Fentimans Rose Lemonade 3.95  
 Fentimans Ginger Beer 3.95  
 Appletiser 3.95  
 Orange/Apple Juice 2.35  
 Still/Sparkling Water 2.50

## Alcohol Drinks from Japan

### Japanese Beers

Asahi Beer 330ml/500ml 4.95/5.95  
 Kirin Beer 330ml 4.95  
 Sapporo Premium Beer 500ml 5.25  
 Sapporo Imported Beer 650ml 7.50

### Sake & Plum Wine

Kubota Senjyu 50ml/100ml 3.95/6.95  
 Azure 50ml/100ml 3.95/6.95  
 Tarusake Cold Sake bottle 300ml 8.30  
 Hot Sake 200ml 7.85  
 Plum Wine 50ml 3.95  
 Sparkling Sake Hana-Waka 250ml 7.20  
 (Yuzu, Peach or Original)  
 Sparkling Sake MIO 300ml 7.20

## Other Alcohol Drinks

### Rose & Champagne

Rose-Sweet Zinfandel 187ml 5.95  
 Prosecco TREVISIO Sparkling 180ml 6.95  
 Freixend 200ml 6.95  
 Rose-Pinot Grigio AMANTI 750ml 16.00  
 Prosecco-N.V.AMORI 750ml 19.00  
 Champagne-750ml 29.95

### White Wine

Pinot Grigio 187ml 5.95  
 Pinot Grigio 750ml 16.00  
 Sauvignon Blanc-Waveride 750ml 19.00

### Red Wine

Shiraz 180ml 5.95  
 Rioja Vega 750ml 18.00  
 Pinot Noir-Papauda 750ml 17.00